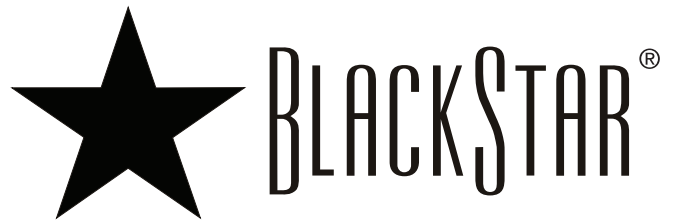
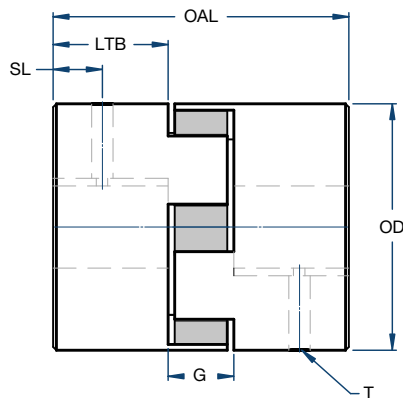


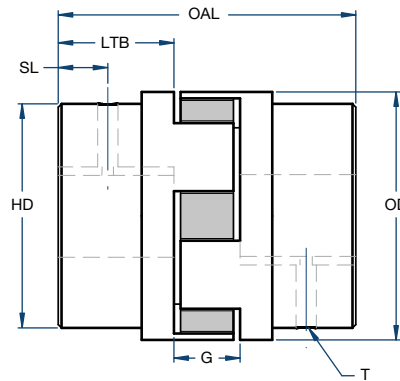
# Jaw Couplings



## L TYPE



Style 1



Style 2

### Dimensions

Size	Style No.	Bore		Outer Dia. OD	Overall Length OAL	Gap G	Length Thru Bore LTB	Hub Dia. HD	Set Screw Location SL	Set Screw Size T	Weight (lbs)		Moment of Inertia lb-In <sup>2</sup> (Solid)
		Min.	Max.								Min. Bore	Max Bore	
L035	1	0.125	0.375	0.63	0.81	0.28	0.27	0.63	0.13	#6 - 32	0.1	0.1	0.003
L050	1	0.250	0.625	1.08	1.71	0.48	0.62	1.08	0.31	1/4 - 20	0.3	0.2	0.054
L070	1	0.250	0.750	1.36	1.98	0.48	0.75	1.36	0.38	1/4 - 20	0.6	0.4	0.115
L075	1	0.250	0.875	1.75	2.13	0.50	0.82	1.75	0.31	1/4 - 20	1.0	0.8	0.388
L090	1	0.250	1.000	2.11	2.15	0.52	0.82	2.11	0.44	1/4 - 20	1.5	1.2	0.772
L095	1	0.437	1.125	2.11	2.51	0.52	1.00	2.11	0.44	5/16 - 18	1.8	1.3	0.890
L099	1	0.437	1.188	2.54	2.84	0.71	1.06	2.54	0.44	5/16 - 18	2.5	2.0	2.048
L100	1	0.437	1.375	2.54	3.48	0.71	1.38	2.54	0.44	5/16 - 18	3.2	2.4	2.783
L110	1	0.625	1.625	3.32	4.22	0.88	1.68	3.32	0.75	3/8 - 16	6.6	5.3	8.993
L150	1	0.625	1.875	3.75	4.50	1.00	1.75	3.75	0.75	3/8 - 16	8.8	7.0	11.477
L190	2	0.750	2.125	4.50	4.86	1.00	1.94	4.00	0.88	1/2 - 13	15.3	12.3	39.256
L225	2	0.750	2.625	5.00	5.34	1.00	2.18	4.25	1.00	1/2 - 13	19.6	15.0	65.000
L276	2	0.875	2.875	6.18	7.82	1.58	3.12	5.00	1.56	1/2 - 13	40.0	30.5	188.000

### Torque Ratings

Size	Material									
	Max Bore		SOX (NBR) Torque		Urethane Torque		Hytrel Torque		Bronze Torque	
	in	mm	in-lbs	Nm	in-lbs	Nm	in-lbs	Nm	in-lbs	Nm
L035	0.375	9.0	3.5	0.4	N/A	N/A	N/A	N/A	N/A	N/A
L050	0.625	16.0	26.3	3.0	39	4.5	50	5.6	50	5.6
L070	0.750	19.0	43.2	4.9	65	7.3	114	12.9	114	12.9
L075	0.875	22.0	90.0	10.2	135	15.3	227	25.6	227	25.6
L090	1.000	25.0	144.0	16.3	216	24.4	401	45.3	401	45.3
L095	1.125	28.0	194.0	21.9	291	32.9	561	63.4	561	63.4
L099	1.188	30.0	318.0	35.9	477	53.9	792	89.5	792	89.5
L100	1.375	35.0	417.0	47.1	626	70.7	1,134	128.0	1,134	128.0
L110	1.625	42.0	792.0	89.5	1188	134.0	2,268	256.0	2,268	256.0
L150	1.875	48.0	1,240.0	140.0	1860	210.0	3,708	419.0	3,706	419.0
L190	2.125	55.0	1,728.0	195.0	2592	293.0	4,680	529.0	4,680	529.0
L225	2.625	65.0	2,340.0	264.0	3510	397.0	6,228	704.0	6,228	704.0
L276	2.875	73.0	4,716.0	533.0	N/A	N/A	N/A	N/A	12,500	1,412.0